



NON SPECIFIC DESIGN FOR DIAMOND PRO WALLS UP TO 1500mm

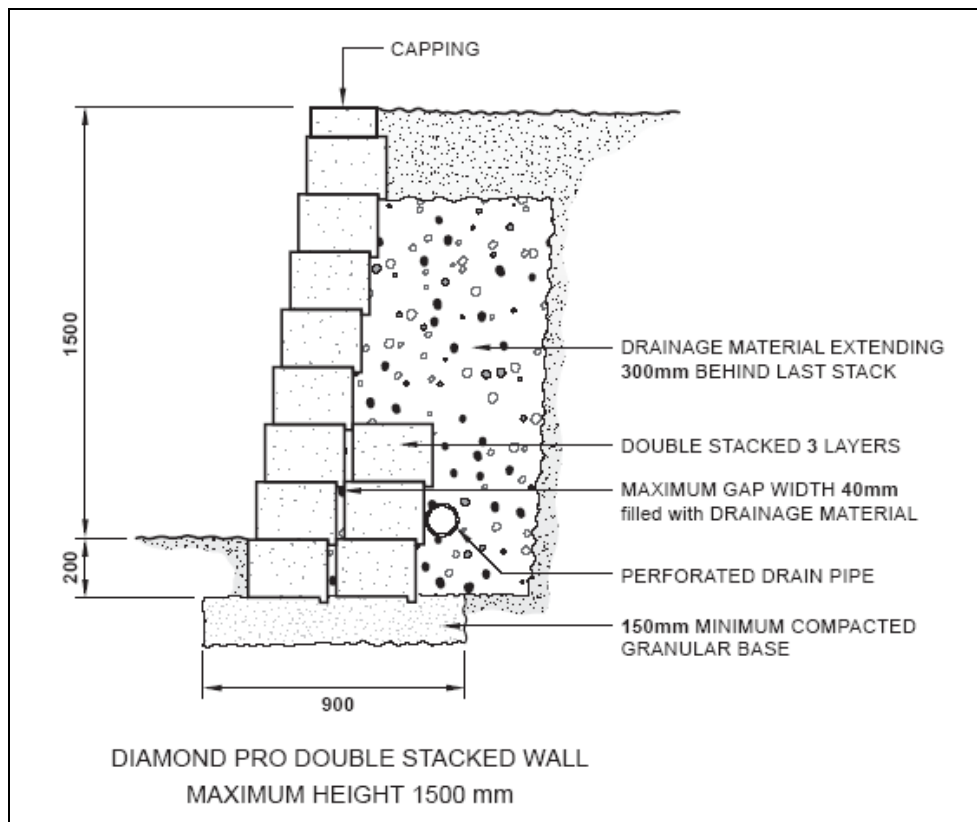
Design Assumptions/ Notes

- Soil types allowed:

Gravel	$\Phi = 30^\circ$	$\gamma = 19.6\text{kN/m}^3$	$c = 0\text{kPa}$
Sand	$\Phi = 30^\circ$	$\gamma = 16.7\text{kN/m}^3$	$c = 0\text{kPa}$
Clay	$\Phi = 25^\circ$	$\gamma = 16.7\text{kN/m}^3$	$c = 10\text{kPa}$

- Slopes shall not be present above or below the wall
- If terracing, the closest allowable wall shall be 3500mm
- Drainage material shall have a minimum unit weight of 16kN/m^3
- Every core shall be filled with drainage material
- Maximum gap between stacks shall be 40mm and filled with drainage aggregate
- Standard installation procedures shall be adhered to
- Not suitable for shoreline or water applications
- Site soils are clean sand and gravel
- No surcharge loads are allowed for

DIAMOND PRO DOUBLE STACKED WALL MAXIMUM HEIGHT 1500mm



Should your application fall outside these parameters then it is not a non-specific design and will need to be engineered - email info@firth.co.nz or contact Firth Customer Service on 0800 800 576 for more information.