

DECEMBER 2025

Firth Retaining Wall Blocks


Firth

 **KEYSTONE**[®]
RETAINING WALL SYSTEMS

Firth's Retaining
Wall Brochure



0800 FIRTH 1
FIRTH.CO.NZ

RETAINING BLOCKS

Firth masonry retaining blocks are the perfect, low maintenance, choice for landscaping uses across New Zealand's wet climate and variable terrain. Delivering unsurpassed durability and a range that covers classic DIY projects, like fire pits, raised gardens and mowing strips, through to benches, outdoor kitchens and engineer designed MSE walls (> 0.9m high).

Ezi Wall

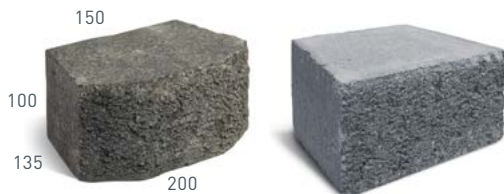
Weight: 5.0kg
Units per Lm: 7.14 (57 per m²)
Vertical walls: up to 0.5m



Reversible blocks with Split-face. For curved and straight walls.

Keystone Sedona Stone

Weight: 5.0kg
Units per Lm: 5 (50 per m²)
Batter setback walls: up to 0.5m



KeyKut (coarse) finished with Tri-face and Straight Face versions available for curved and straight walls. Batter setback interlocking rear lip not shown in images.

Keystone Garden Wall (tri-face)

Weight: 13kg
Units per Lm: 3.3 (33.3 per m²)
Batter setback walls: up to 0.7m



A split-face block for curved and straight walls. Batter setback interlocking rear lip not shown in image.

Keystone Country Manor (set)

Weight: 27kg / 18kg / 11kg / 12.2kg (cap)
Units per Lm: 1.29 sets (8.6 sets per m²)*
Vertical walls: up to 0.7m (0.9m batter setback)
Engineered walls: >0.9m



Reversible blocks with KeyKut (coarse) textured faces. See Retaining Brochure for dimensions.
 * Dependent of block laying pattern.

Keystone Compac III

Weight: 32kg / 45kg (cnr) / 26kg (cap)
Units per Lm: 2.19 (11 per m²)
Vertical walls: up to 0.7m (1.0m batter setback)
Engineered walls: >1.0m

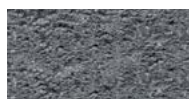


A split-face block for gently curved, straight and right angle heavy duty walls. See Retaining Brochure for block dimensions.

COLOUR BLENDS - SEE FIRTH WEBSITE OR SCAN BROCHURE QR CODE FOR DETAILS ON COLOUR BLEND OPTIONS FOR EACH PRODUCT.



Ash



Charcoal



Onyx / Black Sands



Rockface



PLEASE NOTE: Colour Blends are indicative only. Viewing a sample before purchasing is highly recommended. Similar to features of real stone, concrete masonry will have natural variations in colours and characteristics. So when choosing Firth masonry, please expect colour hue variations and regional differences due to locally sourced raw materials. It's all part of the natural beauty of our masonry products.



0800 FIRTH 1
 FIRTH.CO.NZ