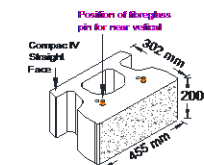
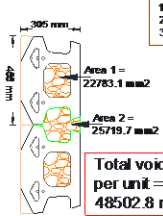


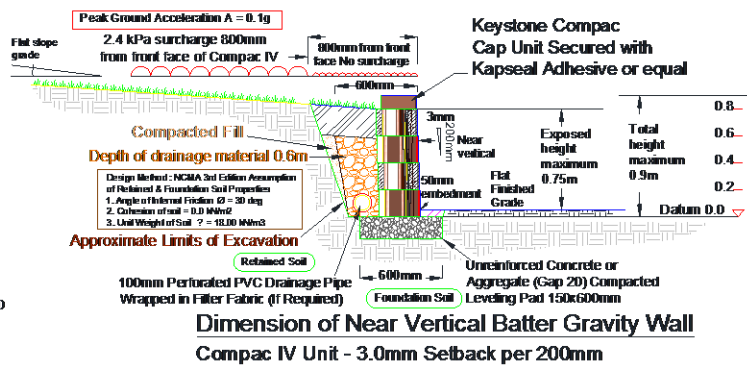
Isometric View of Tri-Face Compac IV



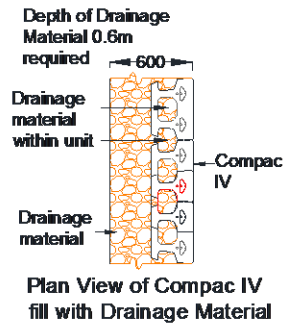
Isometric View of Straight Face Compac IV



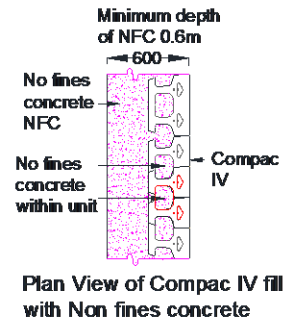
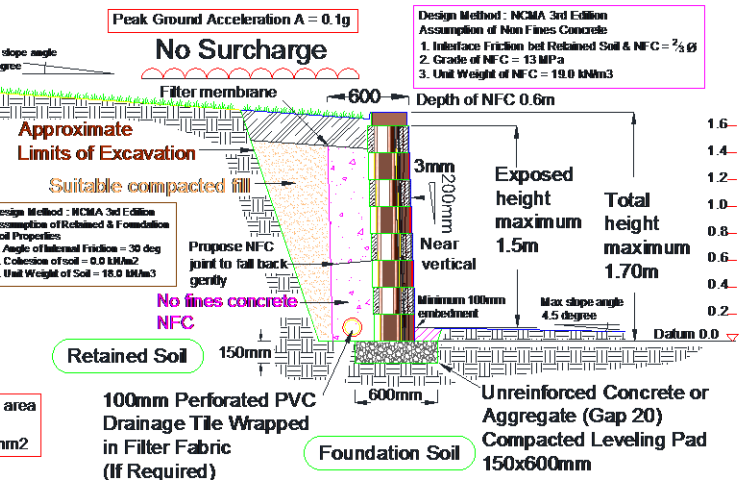
Void Area of Compac IV



Dimension of Near Vertical Batter Gravity Wall
Compac IV Unit - 3.0mm Setback per 200mm

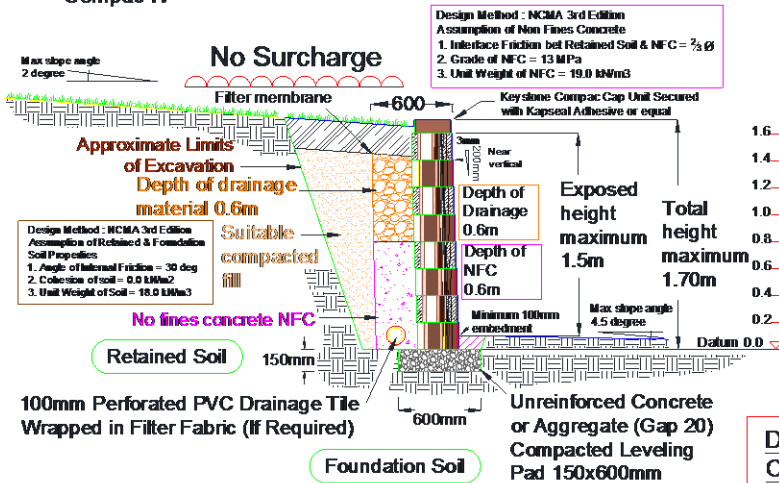


Plan View of Compac IV fill with Drainage Material

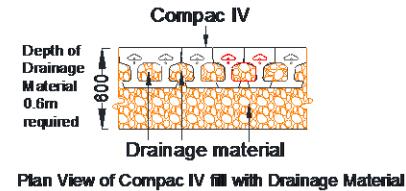


Plan View of Compac IV fill with Non fines concrete

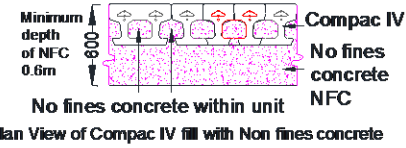
Reinforced Wall Section with Non Fines concrete
Compac IV Unit - 3.0mm Setback per 200mm



Dimension of Near Vertical Batter Gravity Wall
Compac IV A Combination of Drainage & NFC
Compac IV Unit - 3.0mm Setback per 200mm



Plan View of Compac IV fill with Drainage Material



Plan View of Compac IV fill with Non fines concrete

Disclaimer: (As per cover email attached & below)
The design suggestion is provided for evaluation purposes only. It is not to be considered a full design as:
- we are not consulting engineers,
- we are not privy to all the information pertaining to this matter and
- we have no control over the project or installation of the product.
The design suggestion is provided without obligation. It should not be used for construction purposes. Complete engineering design is to be performed by a suitably qualified engineer. Quantities reflected in this document are indicative only. Accurate measurement and calculation of actual quantities should be done by a suitably qualified person.
Firth accepts no liability for the improper use of the design suggestion

- Note:
- The retaining wall shall be constructed in accordance with Keystone specification and good construction practice.
 - Variation of parameters within the tolerance as specified are expected.
 - The non fines concrete shall be based on Firth's specification

Before you start any landscaping or building project, it's important you make sure the finished job will comply with the appropriate building codes and council regulations. For full information on the regulations applying in your area, call the engineer's office at your local council



0800 800 576
www.firth.co.nz
Email : firth.retainingwalls@firth.co.nz

Title : Fiberglass Shear Pin System
Keystone Wall - Combination of NFC & Drainage Fill

Revision	Scale : As shown
1	04 Sept 2014

Drawing No
Firth/Combined Gravity Wall/2014/SD17